
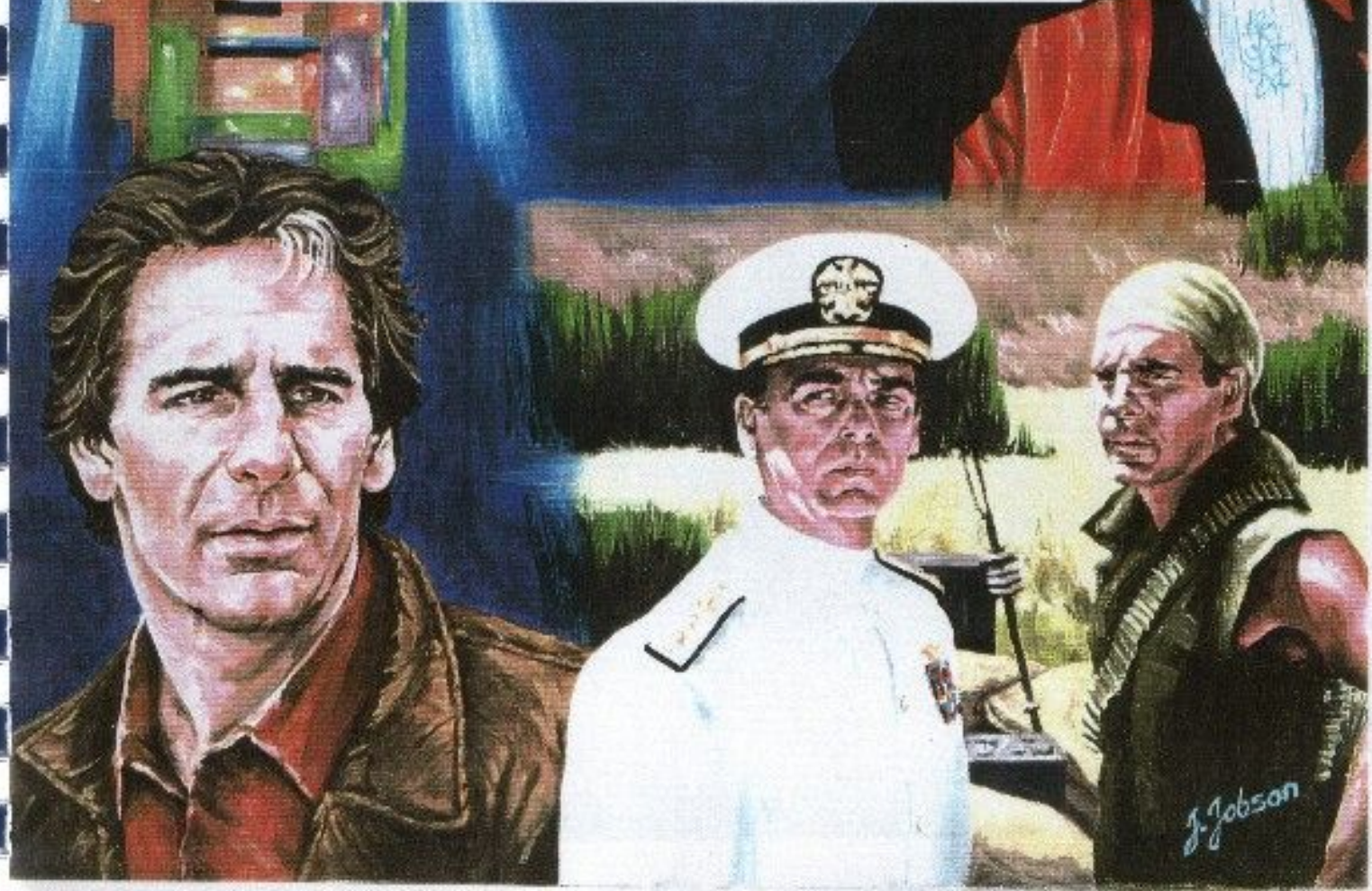




SPRING LEAP '99. 



# CONTENTS

**Cover:** Artwork by Joan Jobson

**Inside Front Cover:** Photo of Scott Bakula and Dean Stockwell, © Universal/MCA

**Page Two:** Artwork by Sherry 'Sherlock' Watson. Will be available to buy at our Charity Auction (See separate auction list)

**Page Three:** Your Committee: The Loony Lady Leapers - Penny Jeffrey, aka Gabrielle, Philippa Chapman, aka Xena, and Emma, aka ... uh, Emma.

**Page Four:** Welcome to Buxton - Curious about where **Spring Leap '99** is being held? Take a look here. Plus a thank you to **Buxton Water** and **Thomas Cook**

**Page Five:** Rules and Regulations - etiquette for Leapers

**Page Six to Page Seven:** Leap Events - what are you gonna do? Take your pick from our Convention programming. Guaranteed not to be pre-empted in favour of snooker/cricket/enter-sport-of-your-choice.

**Page Eight :** John D'Aquino biography

**Page Nine:** Colin Baker biography

**Page Ten - Page Eleven:** Laundry: A Quantum Mechanical Approach by: Brian J. Reardon. You ever wonder why your socks always disappear in the wash? The answer is here.

**Page Twelve:** Thank you's, grovelling and advertisements.

❖ **SPRING LEAP '99.** ⚛



# YOUR COMMITTEE – THE LOONY LADY LEAPERS

So, you wanna know who's responsible for this? What makes us tick? Go away, we're not telling! Nah, c'mon back. Just kidding. Here's a little potted biography about the three Leapin' Loonies who decided that it would be a good idea to put on a convention ...



## PENNY J JEFFREY

The blonde one with the 'Quantum' legs! Big fan of QL (been popping over to those US cons for several years now!) This is my first attempt at being an organiser for one, but what the hell! My motto is 'go with the flow!' Woman of many talents (what??) Loves to sing alot, as you'll find out (so bring the earplugs!) General all round 'mad' young lady who decided to put this con together, by hook or by crook! But couldn't have done it without the help of her faithful assistants Emma Fee & Philippa Chapman. Over to you girls.....



## PHILIPPA CHAPMAN

Greetings from your resident Xena clone! As the senior member of this committee I shall be trying to set a good example for the other two ladies! Born in Bristol, grew up in Wales and now I try to sing for my supper, but not many people are buying. There is a whole heap of QL fanfic to my name which you can buy while you are here to help with Convention funds. There may be one or two surprises this weekend. One of them (if it happens!) will be something I engineered. Have a great time. I'll get Penny and Emma to sit on Scott when they see him in June and not let him up until he's promised to come to the next one! Peace and blessings.



## EMMA CATHERINE MARY FEE

Welcome from the Junior Committee Member! You should be able to recognise me from the photo - I still look the same! Born on July 19<sup>th</sup>, 1978, I've lived in Northampton all my life, and I work as a Nursery Nurse, looking after 19 2-5 year olds on any given day! Be warned - I sing, but only when forced, and my repertoire only covers Nursery Rhymes and Disney (Plus I do a great massacrings of **Three Guys Naked from the Waist Down**) I'm a huge Scott Bakula fan - why else do you think I got involved in this?! Together with my friend, I edit and produce **Quantum Quest**, a British newsletter for fans of **Quantum Leap**, **Scott Bakula** and **Dean Stockwell**. ...What are you still doing sitting here reading this? Go enjoy the convention!

# **BUXTON**

This Roman spa town located in the Derbyshire hills in the High Peak has been popular with visitors from around the world. Recognised as one of the most outstanding scenic areas of Britain, it lies cradled 1000 ft above sea level (making it the highest town in England.) With it's magnificent landscaped parks and elegant buildings.

These 18th and 19th Century buildings form an elegant cluster around the restored Georgian Crescent, which was built by the fifth Duke of Devonshire in 1784 to provide accommodation for visitors attracted by the health-giving thermal spring. In the centre of town, St Ann's well, a fountain, continues to give forth a constant flow of the spring water (which was the reason for Buxton's origin.)

## **OPERA HOUSE**



Most of 'Spring Leap '99' will take place in what has been considered to be, one of the most exquisite opera houses in the British Isles. Built by the renowned theatre architect Frank Matcham in 1903; it was beautifully restored in 1979 and is the venue of high standard performances of music, dance, drama & opera.

The adjacent 23 - acre complex of the Pavilion Gardens embraces a landscaped park with woodland, two ornamental lakes, children's playpark, miniature railway, fully licensed catering facilities\*, a swimming pool and a Conservatory, which is a mass of floral colour all year round.



\* You can also find places to eat down Spring Gardens (just around the corner) or the Market Place, above the Pavilion Gardens. All very reasonably priced.

## **THE OLD HALL HOTEL**



Another venue (where we will be holding our discos and 'special' Karaoke night) is The Orchestra Pit, which is beneath the Old Hall. The hotel is situated over a natural spring. This was the site of the Roman Baths ('Aqua Arnemetiae') thought to have been named after the Celtic goddess Arnemetiae. The Celts considered this spring to be a sacred shrine, possibly a 1000 years or more before the Roman occupation. A more recent famous visitor in 1573 was the unfortunate Mary Queen of Scots. She had apartments there for a number of summers as a house prisoner under the ever-watchful

eyes of Queen Elizabeth I and the Earl Of Shrewsbury. She scratched the famous message on one of the windows ("Buxton, whose warm waters have made thy name famous, perchance, I shall visit thee no more - Farewell.")

## **OTHER SITES NEARBY..**



**Poole's Cavern**

If you are staying after the convention, you may like to check out some other places in Buxton? Poole's Cavern (beneath the hills) houses the world's only known 'poached egg' stalagmites! There is also a formation named after a queen, medieval outlaw Poole's buried treasure, spectacular stalagmites, incredible & unique stalactites and crystal formations. Tread in the footsteps of the famous, including Mary Queen of Scots, Daniel Defoe, Florence Nightingale and the late poet laureate Sir John Betjeman.


Close by is a country park and woodland trail through Grinlow Wood. On the top of Grinlow Hill is Solomon's

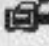


**Solomon's Temple**

Temple, situated on an iron-age burial site.


# RULES AND REGULATIONS

**CONVENTION BADGES** - must be worn AT ALL TIMES. Without it, you cannot be allowed into the Opera House, Clubhouse, Old Hall (Video Room) OR the Orchestra Pit. If you lose your badge, please let any committee member know, and a replacement will be issued.  **SMOKING** - is NOT permitted anywhere in the Opera House. But our other venues will allow for this.


 **CAMERAS/CAMCORDERS** - Can be used during the weekend events. However, during the Q&A's, flash photography will only be allowed BEFORE & AFTER our guests talks. (Having constant flashing light in one's eyes is very off-putting!)


**NB:** THERE IS NO POINT TRYING TO TAKE PHOTOS OF THE SCREEN USING A FLASH. THE RESULT WILL BE BLANK NEGATIVES.


**RESERVED SEATING** - The first two rows in the Opera House, are reserved for Committee Assistants, Stewards, Security and the Disabled. Your co-operation in this respect will be appreciated.

 **FACILITIES FOR DISABLED PATRONS** - The Opera House has 3 wheelchair spaces in the Stalls and 2 wheelchair transfer seats. Also an induction loop system is available for the hard of hearing.

**NB:** SPRING LEAP IS COVERED BY 'ELECTRICAL EGGS' WHICH WAS FORMED WITH DISABLED CONVENTION MEMBERS IN MIND. YOU WILL BE ABLE TO PICK UP YOUR SPECIAL BADGE AND INFO. DURING REGISTRATON. OR SEE A COMMITTEE MEMBER. **FOOD & DRINK** - This may NOT be brought into the theatre, Stage area or in the Auditorium. However it can be bought and consumed in the Clubhouse & Old Hall. There will be a bar open during both nights of the disco in The Orchestra Pit.

 **CHILDREN** - Only young people 12 years and upwards are allowed to attend the convention. Sorry, but we do not want any noise or disruptions during the guests Q & A.

 **FIRE & SAFETY** - If such a thing occurs? Please leave the auditorium in single file, quickly and quietly and back out through the foyer. We will have several first-aiders from St John's Ambulance present during the events in the Opera House.

 **GIFTS** - If you have any gifts for either of our guests? Please do not hand them to them during the Q & A in the Opera House. But any other time and venue will be fine.

**NB:** SHOULD ANYONE CAUSE OUR GUESTS ANY DISTRESS? THEY WILL BE EVECATED OFF ANY OF OUR PREMISES IMMEDIATELY!

Please keep the general atmosphere pleasant for all concerned. Any inappropriate behaviour will NOT be tolerated

If you have any questions at all? please approach either Emma Fae, Philippa Chapman or myself, and we will try and help in any way we can.

**THANK YOU! AND HAVE A GREAT TIME!**



With thanks to Buxton Water for their generous donations

Thank you to Thomas Cook, Buxton Branch, 'Travel Agent to the Stars' for their help and patience

**Thomas Cook**

Thomas Cook  
70-72 Spring Gardens  
Buxton  
Derbyshire  
SK17 6BZ

Telephone 01298 79261  
Fax 01298 79370  
ABTA No. 2384X

## **SPRING LEAP '99 EVENTS**

*NB: ALL ITEMS ON THIS SCHEDULE ARE SUBJECT TO CHANGE, DEPENDANT ON GUEST STARS, STAFF, AND TIME LIMITS. ALL CHANGES WILL BE NOTIFIED TO CONVENTION ATTENDEES*  
*ALL ITEMS LISTED HERE TO TAKE PLACE IN OPERA HOUSE, UNLESS OTHERWISE STATED. FOR TIMES AND DETAILS OF ADDITIONAL VIDEOS IN OLD HALL & CIRCLE BAR, PLEASE SEE 'VIDEO DETAILS' SHEET IN CON PACK.*

### **FRIDAY 28TH MAY**

5.00pm REGISTRATION - CLUBHOUSE  
8.00pm - 12.00am DISCO (XMAS AT PQL\*) - ORCHESTRA PIT/ BAR IN OLD HALL  
11pm - 12am (approx) MYSTERYLEAP TRIP - the draw for this will take place before 11pm at the Xmas Disco.  
NB: VIDEOS FROM 12:00PM - 12:00AM OLD HALL (QL)

### **SATURDAY 29TH MAY**

10.00am - 10.15am QL SKETCH and BID FOR DUET WITH JOHN!  
10.30am - 12.00pm MINI SERIES (NETFORCE) Pt 1 - Scott Bakula  
12.00pm - 1.00pm LUNCH BREAK  
1.00pm - 2.00pm QL QUIZ (VIDEO)  
2.00pm - 4.30pm BAND INTRO (QL THEME / SOMEWHERE IN THE NIGHT / IT'S NOT TOO LATE / FATES WIDE WHEEL) AND LASERS!  
VIDEO INTRO/Q&A WITH JOHN D'AQUINO then AUTOGRAPHS IN OLD HALL  
4.30pm - 6.00pm FILM (MAJOR LEAGUE 3) - Scott Bakula  
6.00pm - 7.00pm TEA BREAK  
EXTRA AUTOGRAPHS HERE  
7.00pm - 8.00pm FILM (CATS DON'T DANCE)  
8.00pm - 9.40pm TWILIGHT MAN -- Dean Stockwell

**OPERA HOUSE CLOSSES AT 10.00PM**

**8.00pm - 12.00am WELCOME HOME SAM - DISCO\* (with 'Special Karaoke Night' - 9.00pm - 11.00pm)**

Videos in **OLD HALL** - ALL DAY except Q&A and AUTOGRAPH SESSION  
Videos in **CIRCLE BAR** - ALL DAY except Q&A

### **SUNDAY 30TH MAY**

10.00 am - 11.30pm MINI SERIES (NETFORCE) Pt 2 - Scott Bakula  
11.30am - 12.00pm 'THE HOLOGRAPHIC UNIVERSE' (OLD HALL)  
12.00pm - 1.00pm LUNCH BREAK

1.00pm - 2.30pm CHARITY AUCTION - with a special auctioneer!

2.30pm - 4.30pm Q&A WITH COLIN BAKER (inc BAND INTRO/DR WHO THEME) AND LASERS!

4.30pm - 5.30pm Q&A WITH JOHN D'AQUINO (inc BAND INTRO)

5.30pm - 6.00pm AUTOGRAPHS (OLD HALL)

6.00pm - 6.30pm CLOSING CEREMONY - we hope that you had a great time!

**OPERA HOUSE CLOSSES AT 6.30 PM**

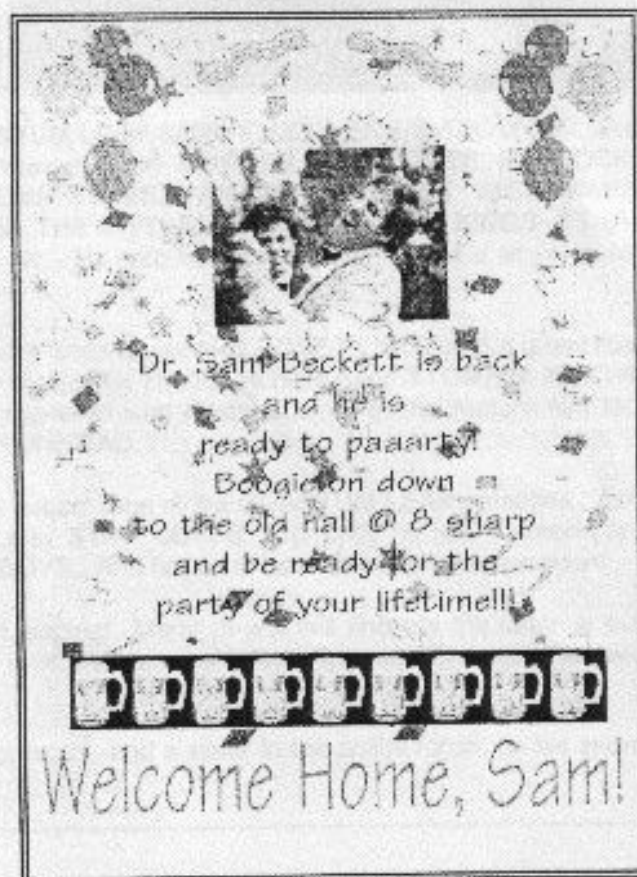
6.30pm - 7.00pm TEA BREAK

7.00pm - 11 pm STEWARDS PARTY IN OLD HALL (BAR)

Videos in OLD HALL and CIRCLE BAR - ALL DAY except Religious Discussion, Q&A's and AUTOGRAPH SESSIONS NB CIRCLE BAR closes at 6.30pm.

DEALERS ROOMS OPEN IN OPERA HOUSE BARS - (EXCEPT CIRCLE) AND FOYER - DURING SAT & SUN (INCLUDING LUNCH/TEA BREAKS.)

**DISCOS - GET DOWN AND BOOCIE!**



Friday Night - Party the night away at PQL's Christmas Disco!  
8pm 'til 12am

Saturday Night - Sam's back and everyone wants to party. Come along and join in on the fun!  
8pm 'til 12am



# **GUEST OF HONOUR**



## **JOHN D'AQUINO**

Born in Brooklyn to an Italian immigrant father and an Italian-American mother, John graduated from Florida State University with a degree in theatre (1980.) He studied later under the renowned Charles Nelson Reilly at Berghoff Studios, New York and appeared in a number of plays as a company member of the Burt Reynolds Theatre.

John's determination to break into the television industry led him to California. Whilst working as a bartender, he was approached by a customer who asked, "Are you an actor?" Amazingly enough he turned out to be the (then) chairman of the board of the William Morris Agency, who promptly signed him up! A true 'Hollywood' story!

This chance meeting ignited his career in television and very soon John was appearing regularly! He had lead roles in the series **WILDSIDE** (1984), **THE DIRTY DOZEN** (1988), **SHADES OF LA** (1993) and **SEAQUEST DSV** (as the crafty but loveable Lt. Ben Krieg) 1994/5. His most memorable guest starring role was as Frank LaMatta in **QUANTUM LEAP** (*JIMMY, DELIVER US FROM EVIL* and *MIRROR IMAGE*). Since then the list has been endless! Shows include: - **MURDER, SHE WROTE**, **MATLOCK**, **M.A.N.T.I.S.**, **MAGNUM PI**, **HEAD OF THE CLASS**, **21 JUMP STREET**, **AMAZING STORIES**, **NIGHTMARE CAFE**, **RENEGADE**, **BAYWATCH**, **SEINFELD**, **CAROLINE IN THE CITY**, **SLIDERS**, **SILK STALKINGS**, **XENA-WARRIOR PRINCESS**, Pamela Anderson's New Series **VIP** etc. He also had a recurring role for a while as Mr Randall in **THIRD ROCK FROM THE SUN**.

His most recent appearances include two episodes of the popular soap opera **MELROSE PLACE**, and a guest role on the TV movie **HARD TIME** (starring Burt Reynolds.) Other Movies Of The Week have been **STOMPIN' AT THE SAVOY** and **THE BABYSITTER'S SEDUCTION**. He also appeared with Kevin Costner in the feature film **NO WAY OUT**, and played the lead in the cult horror movie **PUMPKINHEAD**.

Aside from his numerous TV credits, John is also a successful writer. One of the **QUANTUM LEAP** episodes (*THE BEAST WITHIN*) has his name on it. He also co-wrote the play **STIFF CUFFS**. Currently he has a screenplay under his belt which he co-wrote, entitled **HARD LUCK COWBOYS**. And hopes to have this in production soon!

John also has an undiscovered talent in playing guitar...and singing! Many of you will find out the latter at our 'special' Karaoke night on Saturday, as he has kindly agreed to share his vocal talents with us. One lucky fan will have the opportunity to bid for a chance to share a duet!

John has two brothers, one is a cardiologist the other a chiropractor, and a sister in the police force. In his spare time (whenever he gets any!) he enjoys most sports.

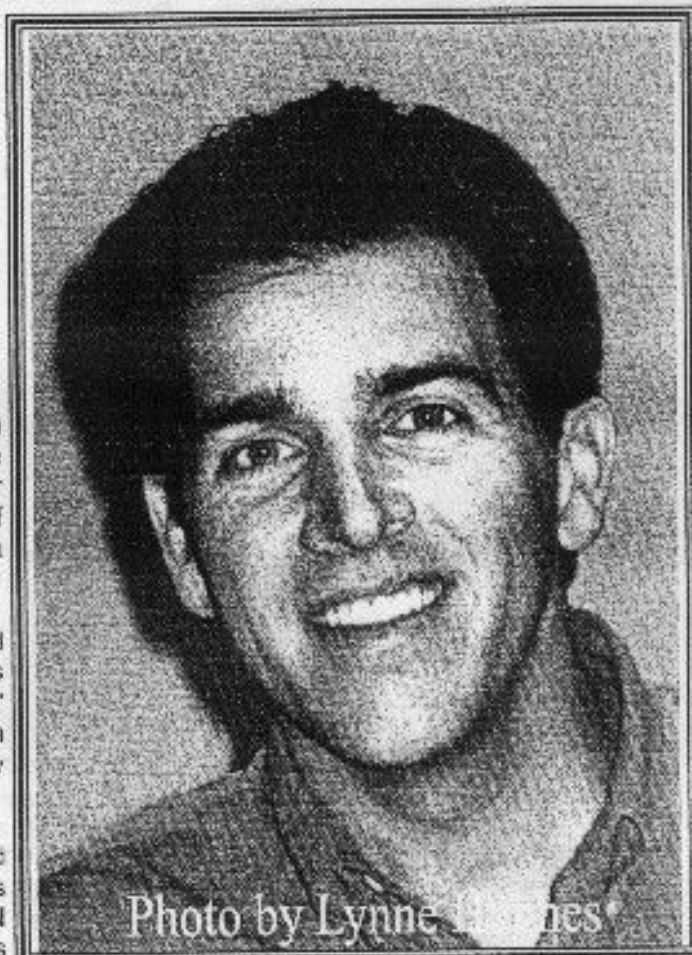


Photo by Lynne Jones

# GUEST OF HONOUR



## COLIN BAKER

Colin Baker was born in 1943 in the Royal Waterloo Lying-In Hospital in London during an air raid.

His first appearance on TV was in 1954 on a series called My Wife's Sister. They needed a child who spoke French well and Colin was picked. His one and only line was "Jolie Nool Papa."

Colin went on to attend St Bede's College in Manchester where he often starred in their annual productions of Gilbert and Sullivan musicals. He studied law and found a job as a

solicitor but, at the age of 23, decided acting was to be his life. He joined the London Academy of Music and Dramatic Art where he trained for three years. Colin began his professional acting career on May 12, 1969 at the Arts Theatre, Cambridge in the play PLAINTIFF IN A PRETTY HAT. Then followed many tv roles, but the one he made his own was as the evil Paul Merroney in the BBC1 series The Brothers from 1974 to 1976. After this series ended, Baker found he was slightly typecast as Merroney, so he indulged in the world of the theatre, bobbing up again every-so-often on tv in programmes such as Blakes 7 and For Maddy with Love, before landing a role as Maxil in the Peter Davison Doctor Who story, Arc of Infinity.

Colin made such an impression on the set of Arc of Infinity that, when Davison decided to leave a few months later, John Nathan-Turner, the producer, decided Colin would be perfect for the role as The Doctor. Colin accepted the role and on 20 August 1983, he was introduced as The Doctor to the press for the first time.

A few months earlier, Colin and his wife suffered the loss of their baby son Jack to cot death syndrome. Colin subsequently became involved with the charity, Foundation for the Study of Infant Deaths. Colin took over as the Doctor at a time when the BBC were desperate for money and had Doctor Who in their sights as one program to suffer the axe. First the show was cancelled, then "suspended" for 18 months and then Colin was made the scapegoat and unceremoniously dumped from the role.

Colin returned to the theatre and also had many other tv roles, including the mysterious and excellent Soloman from the made-for-video series, The Stranger - a Doctor Who for the 90s - and he returned to play the part of the Doctor in the stage production of Doctor Who - The Ultimate adventure. He has an extensive list of credits in television, radio and theatre.

\*Biography taken from the Colin Baker  
Website.



AUTOGRAPH

# Laundry: A Quantum Mechanical Approach

by: Brian J. Reardon

## Introduction

It has been argued that the act of doing laundry followed the discovery of clothing by only a few weeks. While this fact has been regarded to be fantastically trivial, one can not ignore the enigmas that the act of doing laundry has created. This is especially true in the age of high speed washers and dryers. In the early days, the disappearance of articles of clothing could simply be accounted for by saying that the sock was lost in the river. Unfortunately, such excuses can no longer be used today. The availability of high speed automated washers and dryers has provided a number of fundamental questions that can not be answered using the classical laundry theory (i.e.: the river washed the sock away). Such questions include:

- Where, exactly does lint come from and why does the quantity of lint change from load to load?
- If the washing machine is a closed system, how can socks disappear?
- When using public washing machines and dryers, why is it that every once in a while you will find someone else's socks in your load even when you checked the washer/dryer ahead of time?

The inability to answer these questions using the classical theory of laundry resulted in the development of new theories.

This paper is a simple introduction to the quantum theory of laundry. As a result, it only deals with the simplest example in which a sock is analyzed in either a washer or a dryer. The mathematics involved in the analysis of a sock in both a washer and dryer and in transition between the two is left for more advanced laundry courses.

The first modern attempt to explain the fundamental questions of laundry involved the decay theory. The decay theory states that the quantity of socks in a load can be expressed as a decreasing exponential function of time which is analogous to radioactive decay(see equation 1).

$$N_t = N_0 e^{-\lambda t} \quad (1)$$

The decay theory easily explains the origin of lint and why new socks tend to release more lint than old socks. However, according to this theory, socks should never completely disappear, or, more importantly, reappear. This clearly contradicts everyday experience.

### The Quantum Theory of Laundry

The quantum theory of laundry (QTL), however, can explain the fundamental questions of laundry. The QTL is based on three intuitive assumptions.

- The sock never leaves the enclosed system of the washer or dryer.
- While the sock is confined to the total washer system it is not confined to the main washing compartment. It may be in the main washing compartment, in the lint trap, or anywhere in between.

- The sock can be expressed mathematically as a wave function of position and time ( $\Psi(x,t)$ ).

These assumptions can be mathematically manipulated to provide a number of functions and conditions which are in close correspondence to quantum theory.

- The first such condition is that the error in observing the position of a sock in a system multiplied by the error in measuring the momentum of the sock as it travels in the system is a constant. This relation is commonly referred to in quantum mechanics as the Heisenberg Uncertainty Principle(see equation 2). The implication of this relation is quite profound. If one disturbs the washer by looking in it or if one ends its cycle, the act of observing the sock in the main compartment will increase the error in knowing exactly how fast the sock is moving within the system as a whole. This means that the computerized tracking system in the machine that tries to maintain a statistical analysis of where every sock might be may accidentally misplace a sock somewhere in the washing system.

$$\Delta x \Delta p \geq \hbar \quad (2)$$

- The second result of the basic assumptions of the QTL is that the sock must always be somewhere in the washing system. This implies that the probability of finding the sock somewhere within the system at any time must always equal unity, or, the integral of the sock wave function squared must equal 1 (see equation 3).

$$P(x) = \int \Psi^* \Psi dx = \int |\Psi|^2 dx = 1 \quad (3)$$

Using these assumptions, a general form of the wave function for the sock in the washer can be inferred. This function is identical to the standard solution to the Schrodinger Wave Equation (SWE) and can be expressed as two partial derivatives of time and space.

$$-\frac{\hbar^2}{8m\pi^2} \frac{\partial^2 \Psi}{\partial x^2} + U(x) = \frac{i\hbar}{2\pi} \frac{\partial^2 \Psi}{\partial t^2} \quad (4)$$

The sock wave functions that satisfy the SWE can take three forms that represent the three different possible places the sock can reside within the washing system. The entire system can be pictured as an infinite potential energy well that contains a finite energy barrier. The main washing compartment is represented as a potential well(5), the washing system is represented by the potential barrier(6), and the lint trap is represented by another, but narrower, potential well (7).

$$\Psi_1(x,t) = A \sin(kx - \omega t) + B \cos(kx - \omega t) \quad (5)$$

$$\Psi_2(x,t) = E \exp(-Fx - ut) \quad (6)$$

$$\Psi_3(x,t) = C \sin(kx - \omega t) + D \cos(kx - \omega t) \quad (7)$$

Where, the constants A, B, C, D, E, and F, are material properties of the sock and washer system and  $\omega$ , k, and u are cyclic properties of the position of the sock within the washer.

The QTL explains the fundamental of problems of laundry in a very direct manner. The origin of lint can now be defined as the sum of probabilities that a sock traveled or tunneled through the washing system into the lint trap. The sock tunneling phenomenon is analogous to the electron tunneling phenomena in quantum mechanics. The occasional presence of large quantities of lint is easily explained by the real likelihood that entire socks can spontaneously take on the wave function of the lint trap.

The QTL also explains that socks never actually disappear. Quite simply, at the time of disturbance or stopping of the machine they have a wave function that puts them temporarily in the washing system or completely converts them to lint.

Furthermore, if a machine is disturbed during a subsequent washing cycle there is a finite probability that a sock lost in previous cycles may reappear in the main washing compartment. This explains the appearance of other people's sock in your wash.

Lastly, the disappearance of entire loads can be explained by the existence of the finite probability that all of the socks in the main compartment have taken on the wave function of the lint trap and subsequently turned to lint. This further implies that instead of accusing someone of stealing your socks, running the machine while empty for long periods of time will increase the chances of retrieval of most of the socks.

While the current implications the QTL seem extraordinary, the far reaching implications may redefine laundromat etiquette for centuries to come.

- The more often you disturb the system the greater the chance of losing a sock and the greater the chance of retrieving a previously lost sock from someone else's load.
- Furthermore, there is always a probability that an entire load of socks can be lost since the act of disturbing the machine is always a part of doing laundry.
- Thirdly, throwing away lint makes the retrieval of lost socks more difficult. So in all fairness to everyone who as ever used the machine, the lint should never be removed.
- Fourthly, and for the individual, most importantly, when at a Laundromat one should always insist on using the same washer and dryer to increase your chances of retrieving previously lost socks.
- Lastly, and most importantly, washing machine repairpersons will now be required to have extensive backgrounds in quantum mechanics.

Reproduced with thanks from  
<http://www.swcp.com/~breardon/quantum.html> with  
 the permission of Brian J. Reardon  
 <breardon@swcp.com>



Drawing by Joan Jobson



# THANK YOU'S FROM PENNY AND THE COMMITTEE GO TO:-

Opera House staff - (including Martin Robinson <house manager>, Guy Dunk<stage manager> and technicians)  
Old Hall Hotel staff  
The Clubhouse staff  
Radio Derby  
Radio Sheffield  
GMR Radio (Manchester)  
Buxton Advertiser, Derbyshire Times and other local press  
Matlock Mercury  
TV Zone  
Dreamwatch  
Cult TV Times  
SKY's Sci-Fi Channel  
**Granada Television**  
Kam Press - for flyers  
Kevin's Cabs (mini-bus hire)  
**Buxton Mineral Water** ( to keep us from getting dehydrated!)  
**Thomas Cook** ( responsible for flying John to our shores!)  
Project Quantum Leap (especially Margaret Colchin)  
**Quantum Quest** (she knows who SHE is!!)  
Buxton Tourist Info Centre  
**St John's Ambulance** (First Aiders)  
Carolyn Knott ( for loan of a VCR and desiging PQL Console!)  
David Mosely (computer expert & general dogsbody, I couldn't do without. A great flat mate to have!)  
Gary Marsh (for creating our website)  
Ian Collier (for devising a QL video quiz)  
Judith Gooding (our chief camera person)  
Andy C (the karaoke guy)  
Michael and Co. (who provided the 'live' sounds and arranged 'mystery trip')  
Craig Bryan (chaffeur to the 'stars')  
Jan (John's 'minder')  
Mandy Jeffrey (my talented sister, designed logo/sign/banners)  
Joan Jobson (UK artist. Thanks for her wonderful drawings!)  
Sherry 'Sherlock' Watson (US artist for cons overseas. Excellent artwork!)  
Lois McGill (my next door neighbour, who lent me a sewing machine!)  
Sue McGharan (US friend, who taped me John's 'Matlock' episode)  
Cheri  
Lynne Hughes (also helped with travel plans...and kept me 'sane' on the phone! Bless you!)  
Natasha Pavlovich (QL guest star, who donated items for our Auction) ???  
John D'Aquino (our guest, & a dear friend who gently persuaded Scott Bakula to donate items - and also kept me going!  
Sue Morten (my psychic flat mate & advisor. PLEASE VISIT HER PSYCHIC FAIR AT THE CLUBHOUSE, SUN/MON)  
Various Buxton stores (who let me advertise) Can't begin to name them all!  
All those who donated items for our Charity Auction  
All the Stewards and volunteers.

**SORRY IF IVE FORCOTTEN ANYONE! SWISS CHEESED  
BRAIN SYNDROME 'N ALL THAT!  
IF I HAVE? A BIG THANK YOU TO YOU FOR ALL YOUR  
HELP!!!**

••• **SPRING LEAP '99.** 